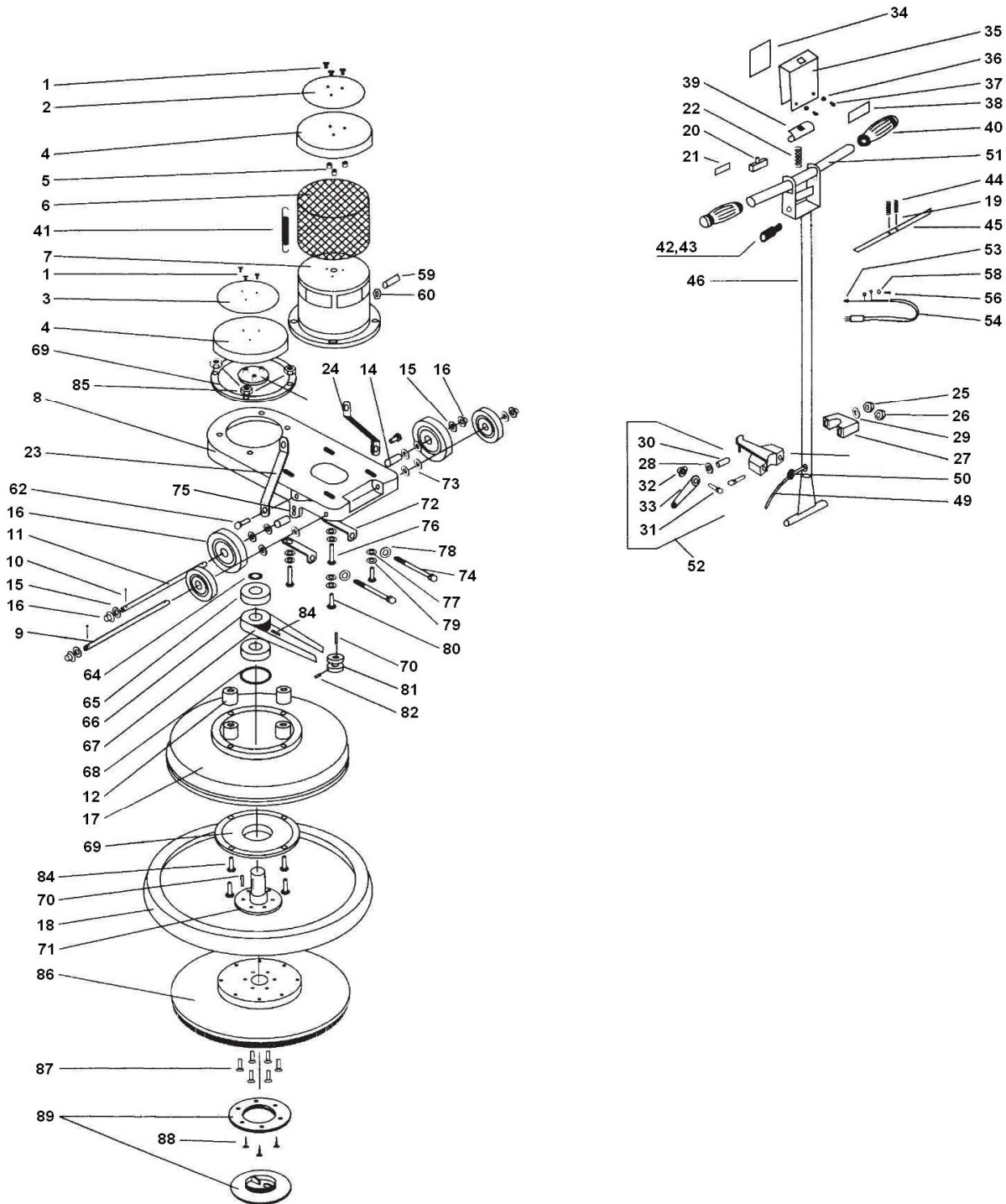


# ASTRO UHS BURNISHER PARTS LIST



<u>ITEM #</u>	<u>PART #</u>	<u>DESCRIPTION</u>	<u>QTY</u>
1	H0002	SCREW 10-24 X 1.00" / 10-24 X .50"	3
2	L0001	LABEL, INDL, 6.5 DIA	1
3	L0006	LABEL 1500 RPM	1
4	C0010-1	COVER, DRIP-MOTOR	1
5	H0003	SPACER, DRIP COVER	3
6	S0016	COVER, MOTOR-SCREEN	1
7	E0027	MOTOR, 115/60, 1.5 HP	1
8	W0004P	FRAME - FLOOR MACHINE	1
9	M0018P	SHAFT HANDLE	1
10	H0006	COTTER PIN	4

<u>ITEM #</u>	<u>PART #</u>	<u>DESCRIPTION</u>	<u>QTY</u>
11	M0017P	SHAFT, AXLE	1
12	M0004	SPACER, FRAME/BRUSH COVER	4
13	C0004	WHEEL, 5" DIA	2
14	M0003	SPACER	2
15	H0008	STEEL WASHER, 33/64" X 7/8"	12
16	H0009	NUTPUSH - .50"	4
17	S0004P	BRUSH COVER, 20"	1
18	C0002	BUMPER, 20" BLACK	1
19	H0012	ROLL PIN	1
20	E0007	SWITCH, ON/OFF	1
21	H0013	INSULATION, SWITCH	4
22	H0014	SPRING	4
23	S0017P	CONNECTING LEG - LEFT	1
24	S0018P	CONNECTING LEG - RIGHT	1
25	H0015	NUT, 3/8" - 16 HEX NYLOC STANDARD	1
26	H0057	NUT, 3/8" - 16 HEX NYLOC THIN	1
27	C0006P	CLAMP, HANDLE LOCK	2
28	H0001P	WASHER, HARDENED SLOTTED	1
29	H0016	WASHER, 3/8"	1
30	H0017	STUD, CLAMP	1
31	H0018	RIVET, 5/16" X 1.25 LONG RD HEAD	1
32	H0019	PUSH NUT 5/16"	1
33	M0001P	CAM. HANDLELOCK	1
34	L0002	LABEL, SWITCHBOX	1
35	W0003P	COVER ASM, SWITCHBOX	1
36	H0020	LOCKWASHER, #10 EXT TOOTH	1
37	H0040	SCREW, 10-24 X .50 PAN HEAD	1
38	L0005	LABEL, WARNING	3
39	C0003	SWITCH, SAFETY	1
40	C0007	HANDLE GRIP, BLACK	1
41	H0049	SPRING, CLAMP	1
42	H0021	STRAIN RELIEF, POWER CORD	1
43	H0022	NUT, STRAIN RELIEF	1
44	H0023	SPRING, TRIGGER	1
45	S0008P	TRIGGER	3
46	W0002P	HANDLE WELDMENT	2
47	H0024	NUT, 3/8" - 16	1
48	C0008P	CORD HOOK BODY	1
49	E0028	IN-HANDLE CORD, 14-4	2
50	H0028	GROMMET	1
51	E0010	HANDLE ASM, COMPLETE	1
52	HP0003	CAM LOCK ASM, INCL 34,36,37,38,39	2
53	H0027	NUT, WIRE	1
54	E0003	POWER CORD, 14-3 ST, 50 FT LONG	1
55	H0029	CLAMP, POWER CORD	2
56	H0040	SCREW, 10-24 X .50	1
57	H0031	COTTER PIN	3
58	H0020	LOCKWASHER, #10 EXT. TOOTH	1
59	H0050	STRAIN RELIEF	4
60	H0022	NUT, STRAIN RELIEF	1
61	H0057	.375 - 16 NYLOC NUT	1
62	H0043	375 - 16 X 1.50 LONG HEX BOLT	1
63	H0015	375 - 16 NYLOC NUT	1
64	H0045	EXTERNAL RETAINING RING	1
65	M0019	BALL BEARING	2

<u>ITEM #</u>	<u>PART #</u>	<u>DESCRIPTION</u>	<u>QTY</u>
66	M0014	PULLEY	1
67	C0014-1	BELT	1
68	H0048	TENSION WASHER	1
69	C0011M	BEARING HOUSING	2
70	H0053	SQUARE KEY	2
71	W0005P	DRIVE SHAFT	1
72	S0019P-1	BELT ADJUSTMENT BRACKET	2
73	H0008	WASHER 33/64" X 7/8"	8
74	H0056-3	BOLT 1/4 - 20 X 3.0" LONG	2
75	H0051	SET SCREW 1/4 - 20 X .50"	2
76	H0042	BOLT .375 - 16 X .875" LONG	2
77	H0004	LOCK WASHER SPLIT .375"	4
78	H0054	LOCK WASHER SPLIT .250"	2
79	H0060	FLAT WASHER .375"	4
80	H0041	BOLT .375 - 16 X .750" LONG	2
81	M0015	PULLEY	1
82	H0052	SET SCREW .312 - 18 X .375" LONG	2
83	H0051	SET SCREW .250 - 20 X .500" LONG	1
84	H0044	BOLT .375 - 16 X 2 1/2" LONG	4
85	H0057	NUT, NYLON, 3/8 X 16	4
86	C0012	PAD DRIVER - FLEX	1
87	H0032	FLAT HEAD CAP SCREW 1/4 - 28 X 1"	6
88	H0059	SHEET METAL SCREW #8 PAN HEAD 3/4"	3
89	C0013-1	PAD CENTERING & RETAINING CLAMP	1