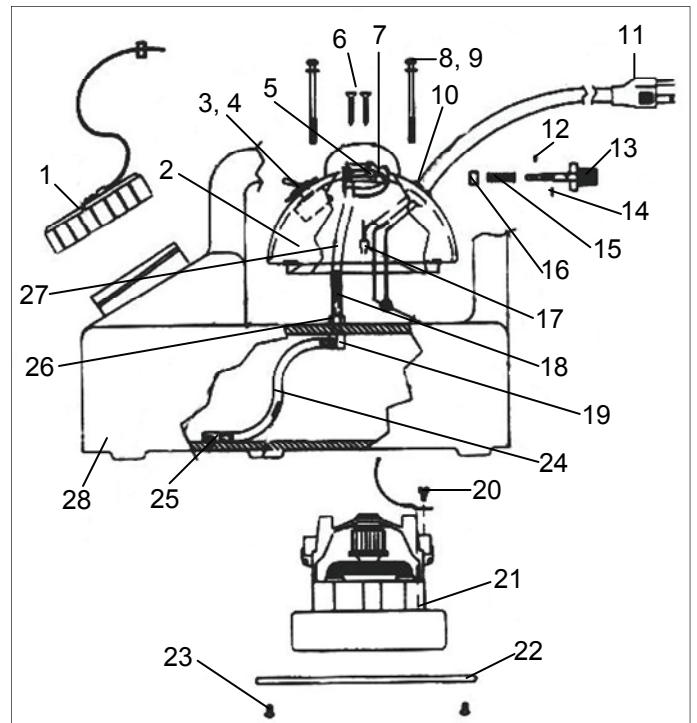


| Part    | Description       |
|---------|-------------------|
| 2385-36 | 36" Hose assembly |
| 2385-48 | 48" Hose assembly |



### My-Ti-Lite 2300, Ultra-Lite 2400

| #  | Part | Description            |
|----|------|------------------------|
| 1  | 2386 | Cap and O-Ring         |
| 2  | 2407 | Housing                |
| 3  | 990  | Switch boot            |
| 4  | 2311 | Switch 110V            |
|    | 2340 | Switch 220V            |
| 5  | 2336 | Ring                   |
| 6  | 2329 | Screw                  |
| 7  | 2346 | Venturi                |
| 8  | 2326 | Flat washer            |
| 9  | 2308 | Screw 12-24 x 3 1/4    |
| 10 | 2315 | Strain relief          |
| 11 | 2314 | Electric cord 110V     |
|    | 2341 | Electric cord 220V     |
| 12 | 2330 | O-ring (Model 2400)    |
| 12 | 2337 | Plug (Model 2300)      |
| 13 | 2331 | Valve rod, knob (2400) |
| 14 | 2332 | Clip (Model 2400)      |
| 15 | 2334 | Spring (Model 2400)    |
| 16 | 2333 | Sleeve (Model 2400)    |
| 17 | 2316 | Wire connector         |
| 18 | 2418 | Spring                 |
| 19 | 1246 | Angle barb             |
| 20 | 2327 | Grounding screw        |
| 21 | 2323 | Motor 110V             |
|    | 2324 | Motor 220V             |
| 22 | 2305 | Motor guard            |
| 23 | 2306 | Screw                  |
| 24 | 2375 | Supply tube, lower     |
| 25 | 2312 | Strainer               |
| 26 | 1241 | Tank barb              |
| 27 | 2401 | Supply tube, upper     |
| 28 | 2404 | Tank                   |

### Flex-A-Lite 2600

| #  | Part    | Description     |
|----|---------|-----------------|
| 1  | 2332    | Clip            |
| 2  | 2334    | Spring          |
| 3  | 2346    | Venturi         |
| 4  | 2331    | Knob assembly   |
| 5  | 2330    | O-Ring          |
| 6  | 2333    | Sleeve          |
| 7  | 2329    | Screw           |
| 8  | 2352    | Screw           |
| 9  | 2357    | Hex nut         |
| 10 | 2359    | Spacer          |
| 11 | 2353    | Nozzle          |
| 12 | 1433    | Spring clamp    |
| 13 | 2354    | Screw           |
| 14 | 2385-18 | Hose assembly   |
| 15 | 2326    | Flat washer     |
| 16 | 2306    | Screw           |
| 17 | 2349    | Pressure tube   |
| 18 | 2374    | Supply tube     |
| 19 | 2314    | Electric cord   |
| 20 | 2311    | Switch          |
| 21 | 990     | Switch boot     |
| 22 | 2315    | Strain relief   |
| 23 | 2386    | Cap and O-ring  |
| 24 | 2384    | Nozzle assembly |
| 25 | 2358    | Tube retainer   |
| 26 | 2319    | Pressure tube   |
| 27 | 2312    | Strainer        |
| 28 | 2316    | Wire connector  |
| 29 | 1241    | Tank barb       |
| 30 | 1246    | Angle barb      |
| 31 | 2375    | Supply tube     |
| 32 | 2327    | Ground screw    |
| 33 | 2323    | Motor 110V      |
|    | 2324    | Motor 220V      |
| 34 | 2305    | Motor guard     |
| 35 | 2306    | Screw           |
| 36 | 2406    | Tank            |
| 37 | 2408    | Housing         |
| 38 | 1145    | Screw           |
| 39 | 2355    | Mount plate     |